

Modular System for Glue Application

The perfect solution
for your 1K and 2K glue
applications

Highlights/ Benefit

- High flexibility by modular design
- Can be used for 1K and 2K adhesives
- Controlling the dosing process via a superordinate control unit
- Continuous process monitoring possible through adaption of sensors
- Integration of heatings possible

Individually adapted to your requirements: the modular glue application system

For media such as adhesives, glues, silicone, polyurethane, acrylate, epoxy or gap fillers

The glue pump, piston dispenser or outlet valve of our modular glue application system come in different sizes (BG) so that you can realize your individual solution for your special requirements. An adaption of sensors provides a continuing process control. An integrated control unit lets you operate the system.

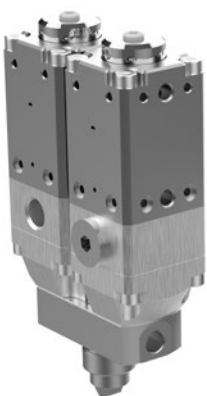
Follow the QR-Code for additional product info



Glue pump	BG2	BG3
Max. operating pressure	360 [bar]	
Ratio	45:1	
Output	4,74 [l/min]	
Supplied volume	79 ccm per double stroke	
Container size	1 - 50 kg	50 - 200 kg
Viscosity range	50000 - 1000000 [cSt]	

Piston dispenser	BG1	BG2	BG3	BG4
Operating pressure	160 [bar]	160 [bar]	160 [bar]	100 [bar]
Max. dosing volume	2,8 [ml]	7,8 [ml]	31 [ml]	100 [ml]
Viscosity range	50 - 1000000 [cSt]			

Outlet valves	BG1	BG2	BG3
Operating pressure	150 [bar]		
Opening width	2 [mm ²]	4 [mm ²]	8 [mm ²]
Viscosity range	50 - 1000000 [cSt]		



You can choose between a static or static-dynamic mixer and do your own configuration. Combining the various outlet valve sizes will result in different options for a 2K application system. Examples: BG1 and BG1, BG1 and BG2, BG1 and BG3 etc.

